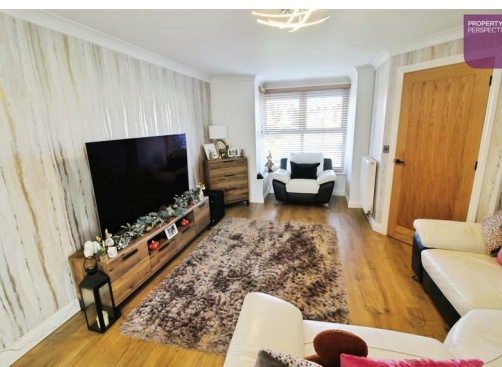




Suggit Way, Hull, HU12 8GR

£337,500

Modern detached house that has undergone internal re model & upgrades located on a corner plot with open aspect to front. Impressive dining kitchen with appliances, timber block worktops & island unit plus contemporary bathroom, en suite & WC. Ready to move in with carpets & blinds.



1 Suggit Way, Hedon, Hull, HU12 8GR

We are delighted to offer for sale this modernised and re modelled detached house located on a corner plot with open aspect to the front and offering access to amenities and transport links.

The property benefits from an energy efficient air source heat pump central heating system plus PVCu double glazing. There is a modern dining kitchen with timber block worktops, island unit and appliances plus a contemporary shower room, en suite and WC. Items of note include internal oak doors, fitted wardrobes to all bedrooms plus French doors to the rear. There are ample sockets and media points to the property. the home is ready to move in with flooring and blinds included as fitted.

To the ground floor is an entrance hall, lounge, dining kitchen and WC. There are 4 double bedrooms, the master with en suite plus a family shower room to the first floor. There is a loft with upgraded insulation..

The property is located on a corner plot with open aspect to the front. Gardens are all well maintained with lawns, patio and planting. There is off road parking for 3 cars plus a garage with remote controlled door.

Tenure - Freehold
Council Tax - Band D

The property comprises.

GROUND FLOOR

Entrance Hall

With fitted flooring.

Lounge 16'11"(max) x 12'4"(max) (5.17m(max) x 3.78m(max))

Having a walk in bay window, laminate flooring and blind.

Dining Kitchen 24'6" x 11'3" (7.49m x 3.45m)

Having a comprehensive range of high gloss wall and base units with complimenting timber block worktops upstands and tiling plus island unit with breakfast bar. With oven, induction hob, hood, fridge freezer, washing machine, dishwasher and wine

cooler. With access to store plus recessed spot lights and French doors leading to the rear garden.

WC 5'3" x 2'8" (1.61m x 0.82m)

Having contemporary white sanitary ware with tiling, ladder radiator and laminate flooring.

FIRST FLOOR

Landing

With fitted carpets. Access to airing cupboard.

Bedroom 1 12'1"(max) x 10'8"(max) (3.69m(max) x 3.26m(max))

With fitted wardrobes, carpets and blinds.

En Suite 6'7"(max) x 3'11"(max) (2.01m(max) x 1.21m(max))

Having contemporary white sanitary ware with vanity basin, ladder radiator, tiling and recessed spot lights.

Bedroom 2 14'10" x 8'7" (4.54m x 2.64m)

With fitted wardrobes, carpets and blinds.

Bedroom 3 13'6" x 8'6" (4.12m x 2.61m)

Currently used as a study with fitted wardrobes and units plus laminate flooring and blinds.

Bedroom 4 10'9"(max) x 9'1"(max) (3.30m(max) x 2.77m(max))

With fitted wardrobes, carpets and blinds.

Family Shower Room 7'4" x 6'0" (2.26m x 1.85m)

Having contemporary white sanitary ware with walk in shower, vanity basin and tiling.

EXTERNAL

The property is located on a corner plot with open aspect to the front. Gardens are all well maintained with lawns, patio and planting. There is off road parking for 3 cars plus a garage with remote controlled door.

